

LED Maschinenleuchte

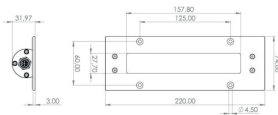
LED machine light



TUBELED_40 II integrated, 220 mm x 74 mm x 3 mm

Artikel-Nr.: 151010-01
EAN: 4260556623948

| | |
|-------------------------------------|--------------------------------------|
| Bestell-Nr.: | 151010-01 |
| Modell: | TUBELED_40 II Integrated |
| Bauform: | LED Einbauleuchte |
| Leuchtmittel: | SMD LED |
| Lampenleistung: | ~8 W |
| Lampenlichtstrom: | 1078 lm |
| Lampenlichtausbeute: | 131 lm/W |
| Lichtverteilung: | Light Forming Technology |
| Lichtfarbe: | Tageslichtweiß (5200 - 5700K) |
| Anschlusswert Leuchte: | 24V DC ± 10% |
| Anschluss Leuchte: | M12 A-kodiert |
| Schutzart: | IP67/IP69K |
| Schutzklasse: | III |
| Entblendung: | Diffusor ESG |
| Abstrahlwinkel: | 100° |
| Betriebstemperatur: | -30... +60 °C |
| Farbwiedergabe (Ra): | > 85 |
| Lampenlebensdauer: | > 60.000 h |
| Material Gehäuse: | Aluminium |
| Material Abdeckung: | Sicherheitsglas, 4 mm |
| Höhe [B] x Breite [C]: | 32 mm x 74 mm, Blende 3 mm aufbauend |
| Länge [A]: | 220 mm |
| Gewicht: | 450 g |
| Bruttogewicht: | 700 g |
| Risikogruppe (DIN EN 62471): | freie Gruppe |
| Kennzeichnung: | CE, UKCA, ETL Listed (5003526) |
| Dimmbar: | optional über Zubehör |
| Gefertigt in: | Deutschland |



TUBELED_40 II Integrated 151010-01

Lampenlebensdauer in Betriebsstunden (L80/B10)

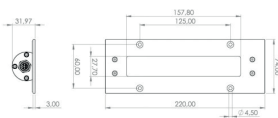
LED Maschinenleuchte
LED machine light



Recessed luminaire TUBELED_40 II integrated,
220 mm x 74 mm x 3 mm

| | |
|---------------------|---------------|
| Item number: | 151010-01 |
| EAN: | 4260556623948 |

| | |
|-----------------------------------|--|
| Order number: | 151010-01 |
| Model: | TUBELED_40 II Integrated |
| Type: | LED recessed luminaire |
| Illuminant: | SMD LED |
| Power consumption: | ~8 W |
| Lamp luminous flux: | 1078 lm |
| Lamp luminous efficiency: | 131 lm/W |
| Light distribution: | Light Forming Technology |
| Light colour: | daylight white (5200 - 5700K) |
| Connected load: | 24V DC ± 10% |
| Connection (connector): | M12 A-type encoded |
| Degree of protection: | IP67/IP69K |
| Class of protection: | III |
| Glare-free | diffused safety glass |
| Beam angle (optics): | 100° |
| Operating temperature: | -30... +60 °C |
| Colour rendering (Ra): | > 85 |
| Lamps lifetime: | > 60,000 h |
| Housing material: | aluminium |
| Cover material: | Safety glass, 4 mm |
| Height [B] x Width [C]: | 32 mm x 74 mm, Cover plate 3 mm externally |
| Length [A]: | 220 mm |
| Weight (net): | 450 g |
| Gross weight: | 700 g |
| Risk group (DIN EN 62471): | free group |
| Marking: | CE, UKCA, ETL Listed (5003526) |
| Dimmable: | via optional accessory |
| Made in: | Germany |



TUBELED_40 II Integrated 151010-01

Lamps lifetime in operation hours (L80/B10)